



### USE OF PRODUCT

PRIME Cylinder Series may be used in hospitality, commercial, retail, and residential applications. This product will reduce energy consumption, emits little heat, and reduces cooling loads for added costs savings. Approximately 75% in energy savings compared to incandescent light source. This product is for indoor use only.

### LED ENGINE

LED engine available with CREE LEDs in 2700K, 3000K, 3500K, or 4000K in standard 93+ CRI. 2 Step MacAdam ellipse allows for color consistency between fixtures. LED mounted to aluminum heat sink for maximum life output and thermal management.

### HOUSING

Rugged aluminum housing.

### LED DRIVER

Durable dimmable driver provides high power factor with optimum thermal management to prevent damage caused by high temperature.

### OPTICS

Field replaceable optical lens available in 18°, 30°, 50°, and 80°. Easily achieve narrow spot to wide flood beam pattern. Option for frosted, honeycomb, or solite filter (2 Maximum).

### MOUNTING

The PRIME Cylinder Series may be cable hung, stem mount, surface mount or wall mounted.

### DIMMING

Available in 8 driver selections. (ID) Standard all-inclusive ELV, Triac, and 0-10V dimming driver called Intelligent Drive, 120-277V. (PEQ0) Lutron Hi-Lume Premier Ecosystem 0.1% w/soft on, fade to black dimming, 120-277V. (PEQ1) Lutron Hi-Lume Premier Ecosystem 1% w/soft on, fade to black dimming, (LDE1) Lutron Hi-Lume 1% Ecosystem with soft on, fade to black dimming, 120-277V. (L3DA) Hi-lume 1% EcoSystem/3-Wire L3D Driver (EEI) eldoLED Eco 1% Dim (0-10V), 120-277V. (EDIO) eldoLED Solo 0.1% Dim(0-10V), 120-277V. (EDID) eldoLED Solo 0.1% Dim(DALI), 120-277V.

### LABELS / COMPLIANCE

- CSA Listed for US and Canada
- Damp rated
- 5 year limited warranty.



## ORDERING INFORMATION

### RPA

Diameter   Shape   Length   Directional   Lumens   Color Temp.   Voltage   Dimming   Optical Lens   Filter   Bevel Finish   Cylinder Finish   Mounting   Option

Series	Diameter	Shape	Length	Directional	Lumens	Color Temperature	Voltage	Dimming
RPA	4 - 5"	CY - Cylinder	10 - 10"	DL - Down Light UP - Up Light	10L - 1055 lm 12L - 1250 lm 16L - 1645 lm 21L - 2170 lm 24L - 2495 lm	27 - 2700K 30 - 3000K 35 - 3500K 40 - 4000K	UNV - 120-277	ID <sup>1</sup> Standard all-inclusive ELV, Triac, and 0-10V dimming driver (Intelligent Drive) PEQ0 Lutron Hi-Lume Premier Ecosystem 0.1% w/soft on, fade to black dimming LDE1 Lutron Hi-Lume 1% Ecosystem with soft on, fade to black dimming LDES Lutron Hi-Lume 5% Ecosystem L3DA Hi-lume 1% EcoSystem/3-Wire L3D Driver EEI <sup>3,4</sup> eldoLED Eco 1% Dim (0-10V) EDIO <sup>3,4</sup> eldoLED Solo 0.1% Dim (0-10V) EDID <sup>3,4</sup> eldoLED Solo 0.1% Dim (DALI)

Optical Lens <sup>5</sup>	Filter	Bevel Finish	Cylinder Finish	Mounting	Option
18 - 18°	None - Leave blank	W - White	BL - Black	PH - Pendant	EM <sup>6</sup> - Emergency Battery
30 - 30°	F - Frosted Filter	B - Black	WH - White	SC - Single Cable	LAW - Lutron Athena Wireless Node (RF only version)
50 - 50°	H - Honey comb	H - Haze	SL - Silver	DC - Double Cable	
80 - 80°	S - Solite filter	S - Specular Clear	MTO - Made to order	TC - Triple Cable	
		WE - Wheat		SM - Surface Mount	
		MTO - Made to order		WM - Wall Mount	

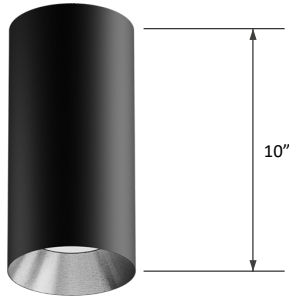
1. Intelligent Drive is the standard driver.  
2. 120V only.  
3. Must specify logarithmic or linear eldoLED driver.  
4. Confirm dimming curve: linear or logarithmic.  
5. Without standard frosted acrylic diffuser  
6. Emergency battery only available in remote mount.

## LUMEN CHART

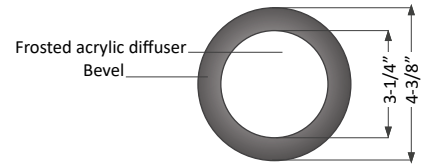
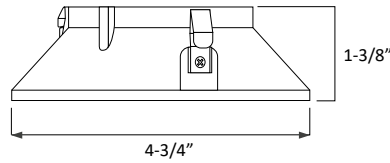
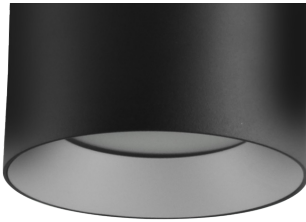
Wattage	Delivered Lumens	Voltage	CRI
11W	1055 lm	120 - 277V	93+
16W	1250 lm	120 - 277V	93+
20W	1645 lm	120 - 277V	93+
30W	2170 lm	120 - 277V	93+
31W	2495 lm	120 - 277V	93+

\*Above chart, ordering information, and IES File name reflect delivered lumens based 3000K and 30° optical lens.  
 \*\*Lumens will vary based on CCT, optical lens, and bevel finish.

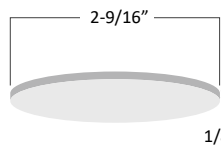
## LENGTH



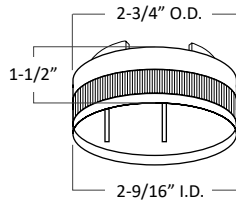
## TRIM HEIGHT



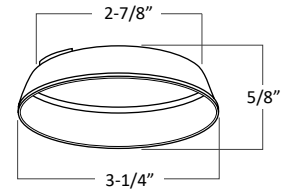
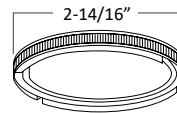
## LED HOLDER & FILTER DIMENSION



Filter



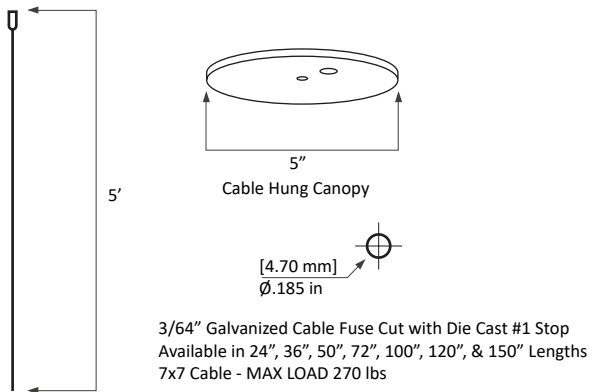
LED Holder



Light Enhancer

## MOUNTING INFO

### CABLE HUNG DIMENSION



### STEM MOUNT DIMENSION

